

7/16系列射频同轴连接器



特点简介

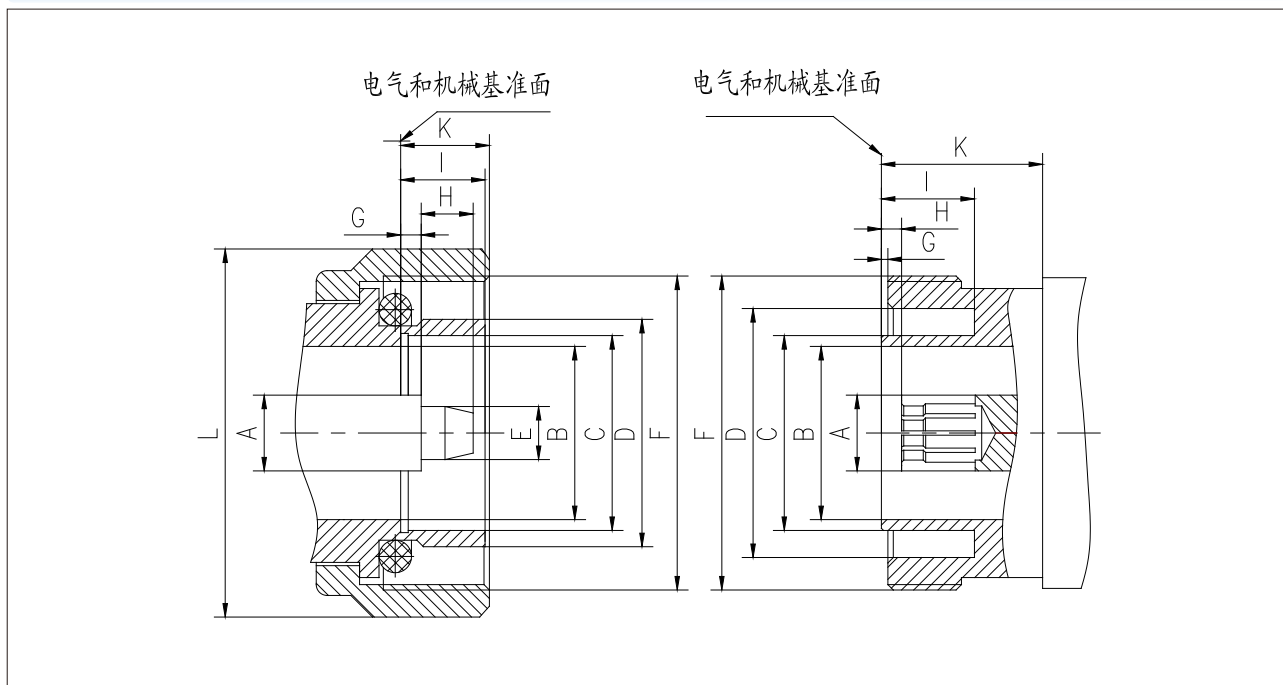
■ 7/16 系列产品是按照 IEC169-4, CECC22230 和 DIN47223 的相关要求生产的一种较大型螺纹同轴连接器, 具有坚固稳定, 低损耗, 工作电压高等特点, 且大部分具有防水结构, 可用于户外作业为中、高能量传输的连接器, 广泛用于微波传输和移动通信系统中。



主要技术特性

温度范围	-65℃~+155℃	绝缘电阻	≥ 5000MΩ
特性阻抗	50Ω	介质耐压	4000V
频率范围	0~7.5GHz	接触电阻	中心导体 ≤ 0.001Ω
工作电压	2000V		外导体 ≤ 0.0005Ω
电压驻波比	直式	≤ 1.30	三阶互调 (910MHz) ≤ -115dBm
	弯式	≤ 1.40	寿命 500次

头部配合尺寸


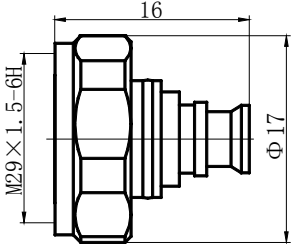
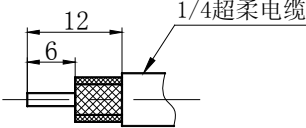

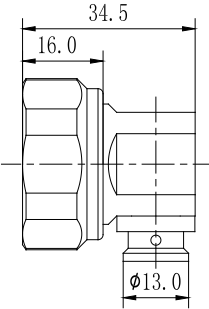
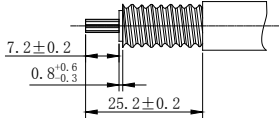

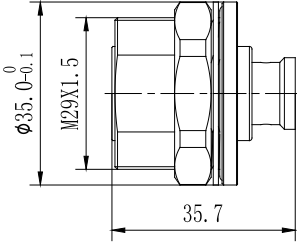
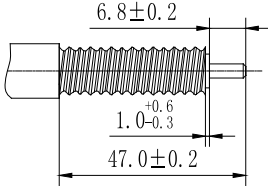

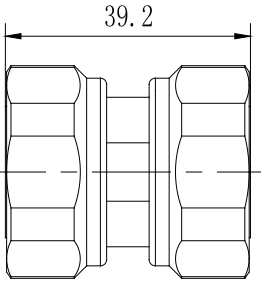


插头			插座		
	最小值	最大值	最小值	最大值	
A	7.0 公称		7.0 公称		A
B	15.85	16.25	15.85	16.25	B
C	18.03	18.21	17.84	18.02	C
D	—	—	22.10	22.90	D
E	4.96	5.04			E
F	M29×1.5		M29×1.5		F
G	1.47	1.77	0.5	0.7	G
H		4.50	1.77	2.07	H
I	7.00	8.00	8.10	—	I
K	7.00	8.00	10.00	—	K
L	SW32				L

7/16系列射频同轴连接器



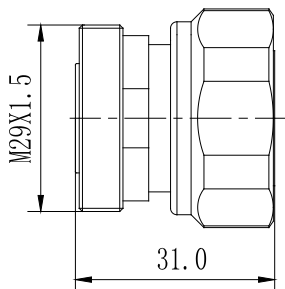
外形尺寸

 <p>7/16-J1/4</p>		<p>电缆剥线尺寸</p> 				
 <p>7/16-JW3/8H</p>		<p>电缆剥线尺寸</p>  <table border="1" data-bbox="1092 1094 1437 1156"> <thead> <tr> <th>类型</th> <th>电缆型号</th> </tr> </thead> <tbody> <tr> <td>7/16-JW3/8H</td> <td>3/8" 超柔电缆</td> </tr> </tbody> </table>	类型	电缆型号	7/16-JW3/8H	3/8" 超柔电缆
类型	电缆型号					
7/16-JW3/8H	3/8" 超柔电缆					
 <p>7/16-K3/8H</p>		<p>电缆剥线尺寸</p>  <table border="1" data-bbox="1076 1543 1437 1605"> <thead> <tr> <th>类型</th> <th>电缆型号</th> </tr> </thead> <tbody> <tr> <td>7/16-K3/8H</td> <td>3/8" 超柔电缆</td> </tr> </tbody> </table>	类型	电缆型号	7/16-K3/8H	3/8" 超柔电缆
类型	电缆型号					
7/16-K3/8H	3/8" 超柔电缆					
 <p>7/16-JJ</p>						

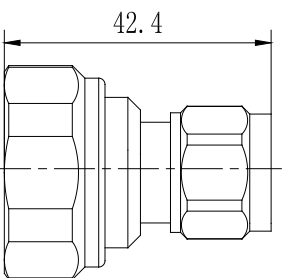
外形尺寸



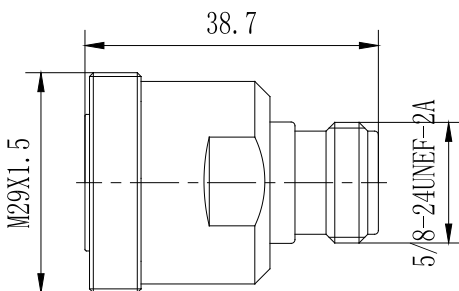
7/16-JK



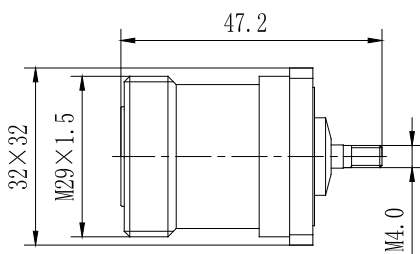
7/16-N-JJ



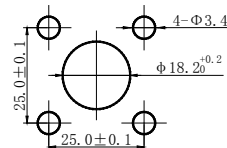
7/16-N-KK



7/16-KFD2



安装开孔尺寸



7/16系列射频同轴连接器



外形尺寸

